



Experience. Technology. Value.

ExCel® Premier Web Filters

Gas Turbine Air Intake System Filters

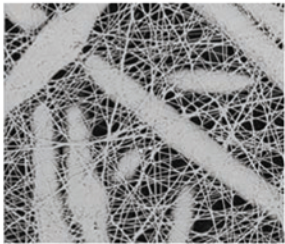
**ExCel® Premier Web Filters:
The Best Balance of
Performance & Value**



Glue Bead Separation Technology (No Corrugation or Pleat Keepers)

MERV 15, F9

to effectively filter submicron dust



ExCel® Premier Web Synthetic Base (Polyester) Traps Particulate at the Surface

ExCel® Premier Web Filters rated for MERV 15, F9 (efficiencies >70% @ 0.4 µm) meeting EN779-2012

The industry's latest engineered nano performance ExCel® filter is available on most media types - including blended cellulose and 100% synthetic substrates. ExCel® Premier Web Filters provide superior return on investment over previous generation filters.

- Optimized for the most challenging pulse jet cleaning applications
- 100% mechanical filtration technology (no "special fabric treatments" that quickly wear off)
- Surface filtration technology
- Hydrophobic performance with maximum wet strength
- Durable construction using mechanical glue bead pleat separation
- Hydrophobic and Super Hydrophobic surfaces treatments

Superior Air Quality is Critical to the Life of your Turbine

MERV 15, F9 technology helps eliminate:

- Compressor blade erosion
- Compressor fouling
- Compressor corrosion
- Cooler passage plugging
- Rotor imbalance
- Blocking of turbine blade roots

Calculating Return on Investment:

- The largest expense during the life of a gas turbine is fuel cost. An 80 MW GT will consume more than \$23 million in fuel a year
- Dirty Compressors can increase fuel consumption by up to 5%
- A decrease in pressure drop of 1" of W.G. represents a savings of over \$300,000/year (Based on \$0.05 cost per KWH on a 150 MW GT)
- A 75 MW unit located in an industrial environment with air loading of 10ppm

80% new filter efficiency on 0.30 µm particles

45% purchase price savings vs. triple layer HEPA filters

0.78" W.G. at 1500 cfm

(918) 283-4818

BradenFiltration.com